

MONTHLY MEMBERSHIP PROGRESS REPORT

LOCATION VIRGINIA

District 24 L

Results as of: 3/31/2023

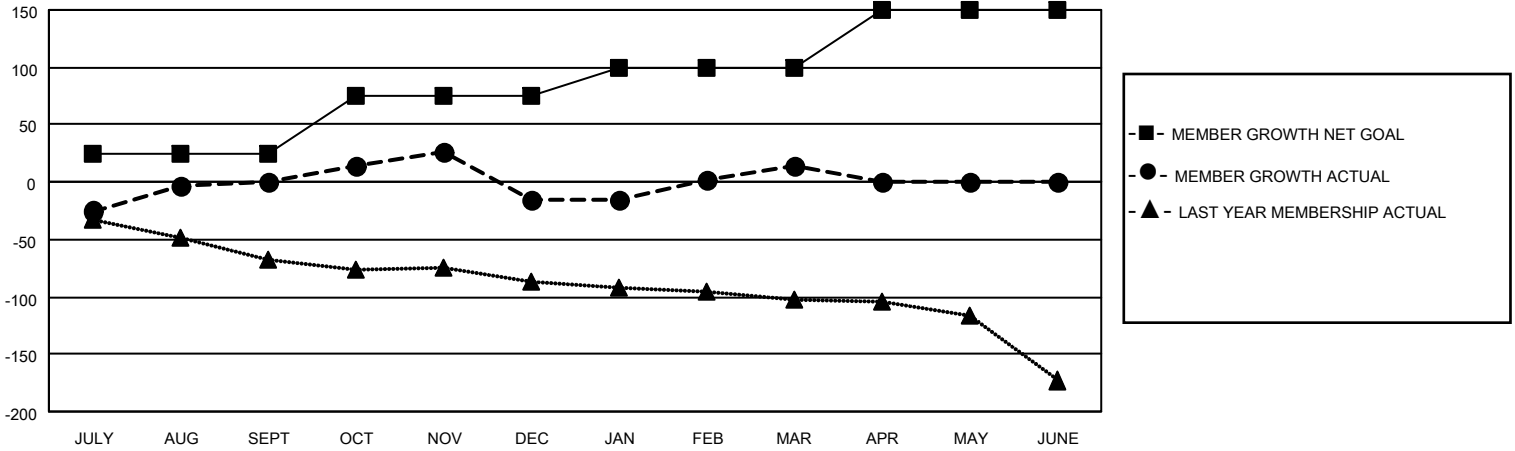
Clubs			
RESULTS FOR 2022-2023			
QUARTER	NEW CLUB GOAL	NEW CLUBS	DROPPED CLUBS
JULY/AUG/SEPT	0	0	1
OCT/NOV/DEC	0	0	2
JAN/FEB/MAR	1	0	0
APR/MAY/JUNE	1	0	0

Members			
RESULTS FOR 2022-2023			
QUARTER	MEMBER GROWTH NET GOAL	MEMBER GROWTH ACTUAL	DROPPED MEMBERS ACTUAL (including transfers)
JULY/AUG/SEPT	25	84	70
OCT/NOV/DEC	50	77	92
JAN/FEB/MAR	25	101	55
APR/MAY/JUNE	50	0	0

GOALS AND ACTUAL NEW CLUBS CUMULATIVE



GOALS AND ACTUAL MEMBERS CUMULATIVE



DROPPED CLUBS: 3

51 CLUBS OF 89 ADDED 1 OR MORE NEW MEMBERS

GENDER DISTRIBUTION

MALE	1,479 (61.34%)
FEMALE	932 (38.66%)
NON BINARY	0 (0.00%)
PREFER NOT TO ANSWER	0 (0.00%)

DROPPED MEMBERS

[CLICK HERE FOR CUMULATIVE MEMBERSHIP DATA](#)

DECEASED	33
CLUB CANCELLED	26
OTHER	158
TOTAL	217

TOTAL FAMILY UNIT MEMBERS	437
FAMILY MEMBERS PAYING HALF DUES	220